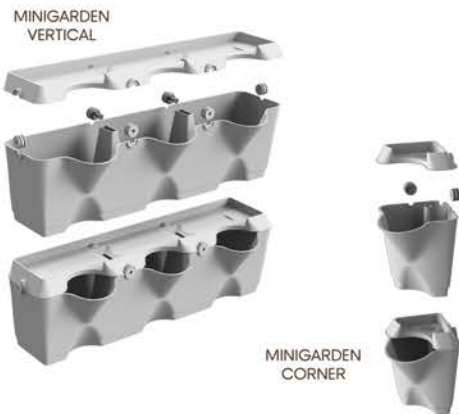




minigarden®

Vertical Garden and Urban Installations by Minigarden.
Solutions for Professionals.





MINIGARDEN VERTICAL AND MINIGARDEN CORNER

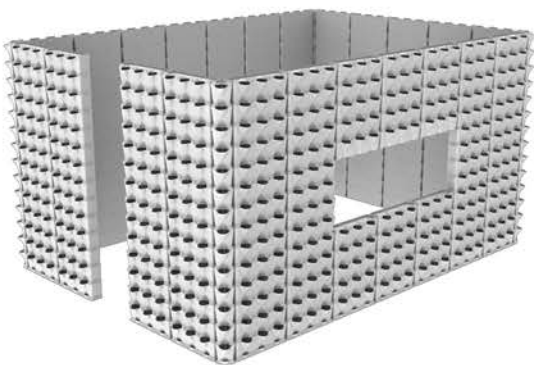
Both Minigarden Vertical and Minigarden Corner modules are comprised by 3 easy-to-assemble parts: a container for planting, round clips and a lid. Each Minigarden Vertical module has 3 slots for plants, whereas Minigarden Corner has 1 slot.



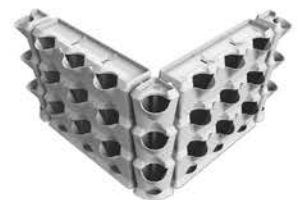
**Inside or outside, you choose.
Minigarden is suitable for
interior and exterior plants**

MODULARITY

Minigarden Vertical and Minigarden Corner modules can be stacked up and connected horizontally, thus creating structures with multiple combinations.



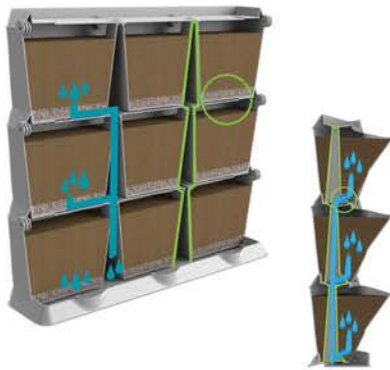
MULTIPLE COMBINATIONS AND POSSIBILITIES



**A mini system capable
of the biggest vertical
gardens you can imagine**

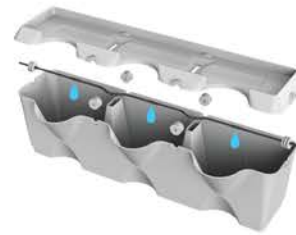
PLANTING

Modules are filled with compost, 12 litres for Minigarden Vertical and 1.5 litres for Minigarden Corner. The plantation process is standard, similar to any other, however, plants can only have a maximum diameter of a 14cm pot.



DRAINAGE, WATERING AND FERTILIZATION

Minigarden vertical gardening system comes with an innovative gravity drainage mechanism. In case the compost becomes saturated due to excess water (from rain or watering), this one of a kind system allows for independent drainage, from each slot to the base tray at the bottom of the structure.

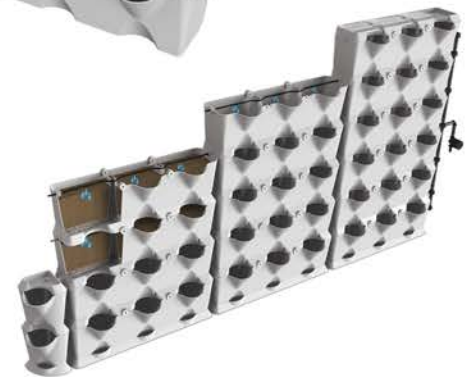


THE DRIPPING IRRIGATION SYSTEM WITH 6.5 MM MICRO TUBE ENSURES A FLOW RATE BETWEEN 2.0-2.4 LITERS/HOUR TO EACH PLANT

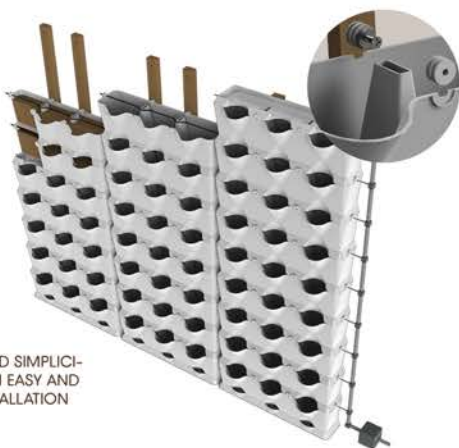
Each plant is watered individually. To ensure this, we have developed a drip by drip system, using a 6.5mm diameter tube with drippers spaced every 20cm. This watering tube is placed inside each module and through the round clips connecting the modules.

The watering system was also thought out to allow fertigation. For this, you only need to add a liquid fertilizer doser.

This 100% automatized system enables a fertilization and watering process with maximum precision.



Unlike other systems, plants can be easily accessed and replaced



INSTALLATION AND SECURING

The system's simplicity enables an easy, systematic assembly, from the floor up, or from any height (for this, it requires a wall mount support at the base).

Whenever needed, modules can be secured to a wall or substructure. This can be done using stainless steel M6 screws (\varnothing 6 mm) placed through the round clips (\varnothing 7mm orifice) of each module.

VERSATILITY AND SIMPLICITY ALLOWS AN EASY AND LASTING INSTALLATION



minigarden®



Minigarden® has inspired countless architects who have created unique projects in such places as Hong Kong, Dubai, Spain, Netherlands, Denmark, Portugal, Mexico, Chile, Morocco, etc.

Its unique features, specifically its modular nature and easy maintenance, make our products ideal for architecture projects, from green walls and vertical gardens to green living spaces of all shapes and sizes.



Visit www.minigarden.net or contact Eng° Mário Esteves
mse@minigarden.net for more detail information and support